

**LAYERS, SELECTIONS, & COMPOSITE
IMAGES**

LESSON

9

Spring 2021

DESCRIPTION

Using Photoshop's layers, selection, and compositing tools to create a composition.
SEE PAGE 3 TO GET STARTED

ASSIGNMENT

Using the files, selection techniques, and directions outlined, create an image
montage similar to example on page 6 of the assignment sheet.

The instructions on how to accomplish this lesson are included in the descriptions
and links with each of the lesson tasks.

MONDAY 3/29**LECTURES** SNOTART.ORG**Raster Art In Digital Design****Color Basics****Student Work****DEMONSTRATIONS** SNOTART.ORG**Intro and Overview of Photoshop****Lesson 9****m 3/29 lesson due**

**Review the listed
LECTURES and
DEMONSTRATIONS
for each day.**

MONDAY 3/29**DUE 5:00 p.m.****PRESENTATION**

Single Adobe Photoshop file with layers intact of the final version of your design.

- Title the PHOTOSHOP file: LSN9-your initials.psd

Submit via DROPBOX to IntroToComputerGraphics Folder

- Click on the link below, though you may have to copy and paste it into your browser.
- The link will open a DropBox window to allow you to upload files. Click the + sign or drag files. From here it is self-explanatory.

<https://www.dropbox.com/request/zM7P8qke2aLLjtTz9cSp>

View instructor comments — not private, please feel free to review other work submitted and comment on.

View via DROPBOX to IntroToComputerGraphics Folder

- Click on the link below—to open the **IntroToComputerGraphics** folder—open your file

<https://www.dropbox.com/sh/a2ypylcwaw6cgy/AABNOBhV4OSxs6YuY8IXZsTca?dl=0>

EVALUATION See Photoshop Lessons Grades Chart

Technical - quality of execution using Adobe Photoshop tools, procedures, and techniques, follows specifications.

Presentation - digital submission - file names and location.

Deadline - deduction for not meeting deadline.

TOPICS

- Overview of Photoshop's menus and tools
- Document background, orientation, size, and resolution—file new
- Working with layers - creating, deleting, merging, flattening naming, locking, moving, viewing, opacity, etc.
- Status bar - print size of image.
- Image modes & models - bitmap, greyscale, rgb, cmyk, index
- Modifying a pictures size/resolution—Image-Image Size
- Adding canvas space to an image
- Crop/flip/flop and rotate a picture
- Making and editing selections on complex and simple backgrounds
 - marquees
 - wand
 - lasso
 - quick select
 - + options
- Move selections
- Cut, copy, paste, selections using menu and drag and drop
- Modify selections using rotate, scale, and other effects (skew, etc.)
- Undos and History palette
- Saving files — file format options (PSD/TIFF/JPEG)
- Color output from Photoshop — **see handout for color settings.**
Flatten a copy to send to the printer for faster print times.

TO START LESSON 9

SPECIFICATIONS

DOCUMENT FORMAT (existing image)

- 6.75" x 5.5" Horizontal orientation.
- Document color mode is RGB
- Resolution is 150dpi

DESIGN & TECH:

- File format is .PSD
- Use layers - one for each "image" or selection

SETUP AND PREP

- Copy the files we will be using for the Adobe Photoshop portion of this class. You probably have already done this.
- Click on the link below, though you may have to copy and paste it into your browser, to copy the tutorial files.
- The link will open a DropBox window to allow you to copy/download files.

<https://www.dropbox.com/sh/q49b3ddf25fdxf7/AABTUD0psyhmaFjZEz-DITVga?dl=0>

REVIEW THE TEXTBOOK CHAPTERS— parts of:

2 create files	5 workspace	6 panels	7 pixel basics
8 layers	9 selections & masks	13 combining images	19 type

LAUNCH PHOTOSHOP.

Make sure you have Tool Tips turned on so when you roll over an item in your Photoshop workspace you get a pop-up with additional information.

Photoshop—Preferences—Tools and make sure both of these are checked
Show Tool Tips
Use Rich Tool Tips

Here is a link to a video of an overview of Photohop

https://helpx.adobe.com/photoshop/how-to/ps-basics-fundamentals.html?playlist=/services/playlist.helpx/products:SG_PHOTOSHOP_1_1/learn-path:get-started/set-header:ccx-designer/playlist:ccl-get-started-1/en_us.json&ref=helpx.adobe.com

Here is a link to a video about working with layers in Photoshop

https://helpx.adobe.com/photoshop/how-to/ps-layers-basics.html?playlist=/services/playlist.helpx/products:SG_PHOTOSHOP_I_I/learn-path:get-started/set-header:ccx-designer/playlist:ccl-get-started-I/en_us.json&ref=helpx.adobe.com

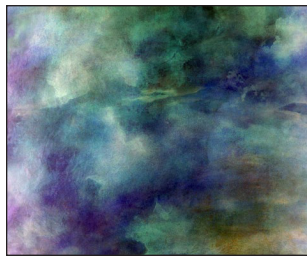
Here is a link to an interactive Photoshop User Guide

this will be helpful in getting details about information covered in the videos

<https://helpx.adobe.com/photoshop/user-guide.html>

After you watch the videos I think you should be able to figure out small details or tasks not specifically addressed in the videos.

CREATE YOUR ARTWORK



Open the file BLUES.

Look at *Image—Image Size* for scale and resolution

Set resolution to 150 dpi with RESAMPLE CHECKED

Rename it LSN9-YOUR INITIALS and save it the PSD format. Keep your new file open.

Link to a video to work with image size

https://helpx.adobe.com/photoshop/how-to/image-resizing-basics.html?playlist=/services/playlist.helpx/products:SG_PHOTOSHOP_I_I/learn-path:get-started/set-header:ccx-designer/playlist:ccl-get-started-I/en_us.json&ref=helpx.adobe.com



Open the file SHOES-150.

Make a new *Rectangular Marquee* selection as shown to the left. Make sure the Style: is normal, and Feather: is set to 0 px

You can add to the selection using the Shift key or take away from the selection use the Option key

You can move the area defined as a section while cursor is within the marquee. You can cut/move a selection (an actual part of the image) using the Move Tool four sided arrow

Copy your selection to your LSN9 file.

Link to a video to work with selections

https://helpx.adobe.com/photoshop/how-to/selection-tools-basics.html?playlist=/services/playlist.helpx/products:SG_PHOTOSHOP_I_I/learn-path:get-started/set-header:ccx-designer/playlist:ccl-get-started-I/en_us.json&ref=helpx.adobe.com



Open the file FRUIT-150.

Using the *Cropping Tool*, crop the image as shown to the left.

Copy the cropped image to your LSN9 file. You can use *Select-All* then *Edit-Copy* and then *Edit-Paste*

Once you have pasted it, scale it down a little bit using *Edit-Free Transform*



Using the cropped FRUIT-150 file

Use the *Elliptical Selection Marquee* to select the left peach. Use *Select—Transform Selection* to adjust your selection marquee best as you can — it won't be 100% accurate, but that's OK.

Copy peach image to your LSN9 file.



Open the file LEAF ON WHITE-150.

Make a *Magic Wand* selection of the background. Set wand to

Tolerance: at 32

Make sure

Contiguous is checked

Sample All Layers is unchecked

The Magic Wand selects by value range.

A lower tolerance setting selects a narrower range of values. A higher tolerance setting selects a wider range of values. Try higher settings to see what happens

Contiguous selects all "connected" or touching areas of the value range.

Select—Inverse your selection.

Copy green leaf selection to your LSN9 file.



Open file PLATE-150

Select the *Quick Selection Tool*.

Make sure

Sample All Layers is unchecked

Choose a 10 pixel brush, select the plate, fork, and knife. Use quick selection+ to make additional selections. Use the quick selection- to release any unwanted selections

Copy plate selection to your LSN9 file.

Scale down plate using *Edit—Transform—Scale*.

Reorder layers so LEAF and PEACH are on top of plate



Open file FLOWERS-I50

Use *Lasso Tool* to make an accurate selection of the tiger lily. Use shift and option keys to add or release selections. Also try *Magnetic Lasso*.

Copy the flower selection to your LSN9 file.

Add the text BLUES MONTAGE.YOUR LAST NAME to your image.

You can select the text and change color, typeface, etc

Name your layers and organize image layers as per the **sample below**. It doesn't have to be an exact match, but close.



Practice, practice, practice !!!

SAVE

Save. Save your artwork as Photoshop .PSD file with layers intact.

Backup. Make appropriate backup copies of your file on servers, Flash drive
NO EXCUSES for lost files.

FINAL OUTPUT & PRESENTATION

Assemble files as required.