

## LIVE PAINT WATCH GRAPHIC

LESSON

7

**DESCRIPTION**

Using Illustrator's Live Paint tool to fill areas of graphic images.

**ASSIGNMENT**

Using the **LivePaint-Watch.ai file provided**, create a Live Paint filled version of the **WATCH GRAPHIC** as demonstrated. See page 3 of assignment sheet.

**WEDNESDAY 3/3** \_\_\_\_\_**DEMONSTRATIONS** SNOTART.ORG

Live Paint—Bee

Live Paint—Watch

w 3/3 lesson due

**WEDNESDAY 3/3** \_\_\_\_\_**DUE 5:00 p.m.****PRESENTATION**

Single Adobe Illustrator document file of the final version of your design.

- Title the ILLUSTRATOR file: LSN7-your initials.ai

**Submit via DROPBOX to IntroToComputerGraphics Folder**

Same process as previous submissions

**View instructor comments — not private, please feel free to review other work submitted and comment on.**

**View via DROPBOX to IntroToComputerGraphics Folder**

Same process as previous submissions

**TO START LESSON 7—LIVE PAINT WATCH**

Review the **textbook chapter**: live paint

**SPECIFICATIONS****DOCUMENT FORMAT**

- 8.5"x 11" image area/artboard (letter size). Horizontal orientation.  
This is how the **LivePaint-Watch.ai** file provided should open

## DESIGN & TECH:

- Document color mode is RGB
- Artwork is areas of color filled using Live Paint
- Keep as a single layer

## PROCEDURES

### SETUP AND PREP

- Launch Illustrator. **Open** the *LivePaint-Watch.ai* file provided.  
**Do not** create a new document and place it as a template and recreate it.

### CREATE YOUR ARTWORK

1. Select all the artwork and create a Live Paint Group.
2. Using the Live Paint tool, add fill colors to the areas defining the watch graphic. You can use any color scheme you like.
3. Using the Live Paint tool, modify the stroke color — if desired.
4. Using the Live Paint tool, add gradients to some areas — if desired.
5. Add your name and save the file. P

### SAVE

**Save.** Save your artwork as a .ai file, the Illustrator 2020 version.

**Backup.** Make a backup copy to your Flash drive and to online storage.  
NO EXCUSES for lost files.

### FINAL OUTPUT & PRESENTATION

Assemble files as required.

## EVALUATION

See Illustrator Lessons Grades Chart

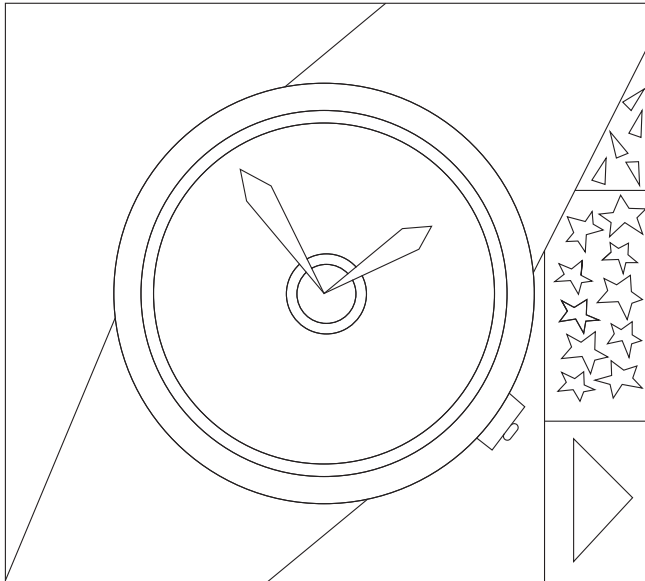
**Technical** - quality of execution using Adobe Illustrator tools, procedures, and techniques, follows specifications.

**Presentation** - digital submission - file names and location.

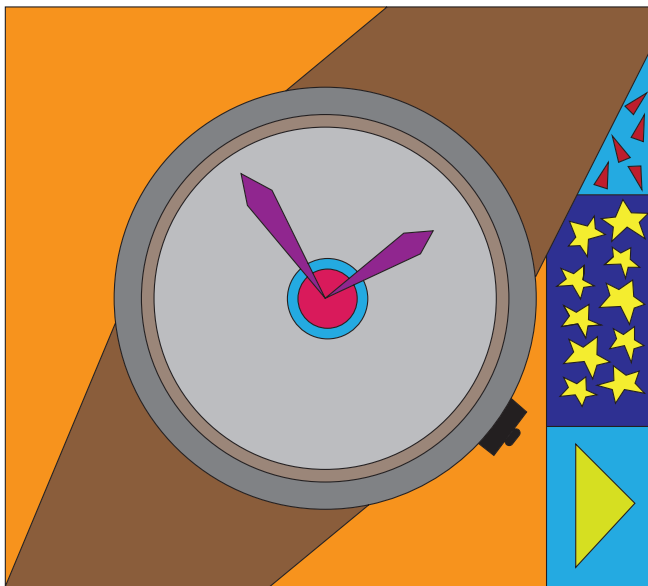
**Deadline** - deduction for not meeting deadline.

## TOPICS

- Live Paint tool
  - creating live paint groups
  - adding to live paint groups
  - filling live paint groups
  - color the stroke of live paint groups—shift to acquire live paint brush
  - edit line work within a live paint groups
  - adjusting gaps in a live paint group
  - expand a live paint group
  - adding gradients to a live paint group
  - live paint selection tool

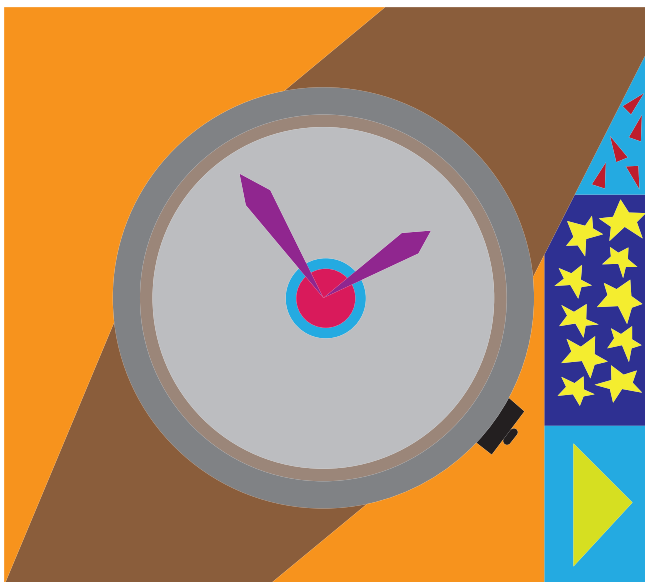


LivePaint-Watch.ai file  
**as opened**



Artwork filled with  
Live Paint with strokes  
still **on**

You **do not** have to  
follow this color  
scheme



Artwork filled with  
Live Paint with strokes  
**off**